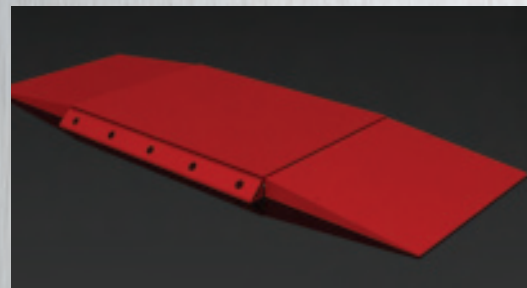


Options

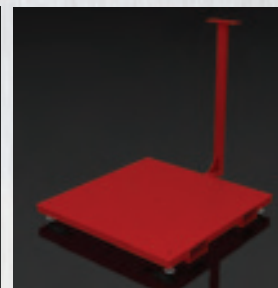
- Digital indicators
- Printers
- Remote junction box
- Floor mounted indicator stand
- Integral indicator stand
- Floor anchor plates
- Stainless steel tread plate decking
- Ramps / Bump ramps
- Risers frame / Pit frame
- Foot retaining plates
- Lift truck fork pockets (Integrated in scale weighbridge)
- Remote summing box and board
- Wheeled portability frame
- Portability frame with fork pockets
- Free standing indicator column
- Indicator column attached to scale
- Smooth deck plate
- Galvanized / Custom colors
- Side access summing box
- Mounting holes or studs for field mounted equipment
- Stainless steel, Hermetically sealed load cells



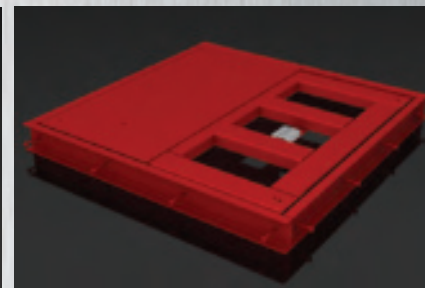
Bumper, riser & column



Dual ramp & bumper



Fork pockets & column



Removable deck & pit frame

CLYDESDALE
FLOOR SCALE

B-TEK Scales, LLC • 1510 Metric Ave. SW Canton, OH 44706 • Toll Free: 800.266.8900 • Fax: 330.471.8909

WWW.B-TEK.COM

B-TEK Distributor



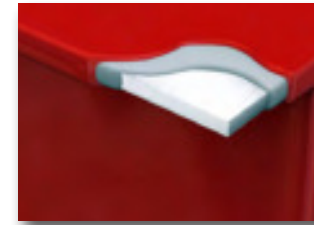
CUTTING-EDGE TECHNOLOGY

Over 95 years of combined manufacturing experience

CLYDESDALE FLOOR SCALE

The Clydesdale Floor Scale is designed for use in variety of industrial, commercial and agricultural applications. The scale is available (non-trade approved) with a platform size from 1.5' x 1.5' to 10' x 10' with capacities from 500 to 30,000 lbs. NTEP (trade approved) platform sizes range from 2' x 2' to 8' x 10' with capacities from 500 to 20,000 lbs. B-TEK excels in the ability to design and build the Clydesdale for applications beyond the normal, everyday warehouse scale: a galvanized scale for a seafood company in Gloucester, MA., an elephant scale for a zoo in Phoenix, AZ., a people-weighing scale for a

water park in Orlando, FL., a scale with hole-in-center so material from a hopper mounted on top can pass through in Decatur, IL., a scale with a gravity roller mounted to top for drum filling in Indianapolis, IN., a scale to hold chlorine ton cylinders at a water treatment plant in Pearl, MS., and a four-platform scale system to weigh newly manufactured automobiles in Lordstown, OH. The B-TEK Clydesdale Floor Scale can be custom built to meet any specific application.



Acrylic Alkyd Enamel Paint System

The Clydesdale features an Acrylic Alkyd enamel paint system. The enamel provides excellent hardness and protects against chipping and wear. The enamel is also more resistant than typical coatings to salt water, cleaning agents, mild acids, solvents and shop chemicals.



Heavy Platform Decking

The Clydesdale standard 5K and 10K capacity platforms utilize 1/4" (minimum) tread plate steel decking. Standard 20K capacity platforms utilize 3/8" tread plate steel decking. The use of heavy deck plate will insure long term structural integrity of the platform. The thick decking will better resist deformation when the platform is placed in a high-use application.



Stainless Steel Ball Encapsulated Feet

Attention to detail is evident down to the smallest element. A uniquely engineered stainless steel foot assembly utilizes a ball bearing to compensate for uneven mounting surfaces and still provide high accuracy weighments. The foot stem can be accessed from the top of the platform for convenient scale height adjustment.



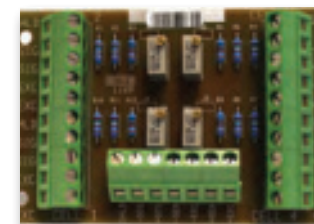
Formed Channel Weighbridge Substructure

The Clydesdale weighbridge utilizes a formed c-channel structural support member. The special c-channel features a taller leg than the structural channel for greater bending resistance. The c-channel height also completely encloses the load cell body for protection.



Top Access Junction Box Cover Plate

The load cell junction box is accessible from the top of the scale platform. This allows the standard Clydesdale scale to be mounted above grade or below floor level without modification. The ease of access to the junction box improves and speeds up scale calibration and serviceability.



Signal Trim Summing Board

The 4-cell signal trim load cell summing board is housed within a FRP junction box well protected under the scale deck. The junction box features a gasketed tongue and groove lid seal for environmental protection. The summing board is protected by a conformal coating essential for enhancing the assemblies reliability and performance.



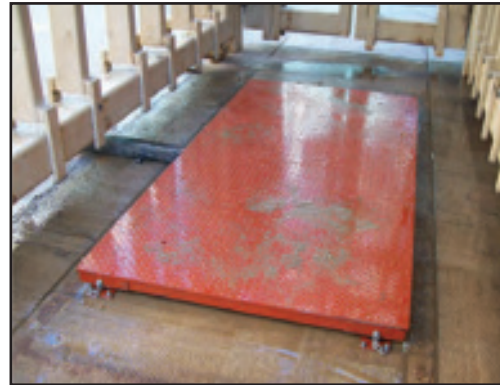
Precision Load Cells

Precision load cells are the heart of a quality scale platform. The Clydesdale features high quality plated alloy steel shear beam load cells. The cells have low sensitivity to axial loading, excellent accuracy and long term measurement stability. The cells are environmentally protected (IP67) and can be safely used outdoors. Cells are optionally available in stainless steel.

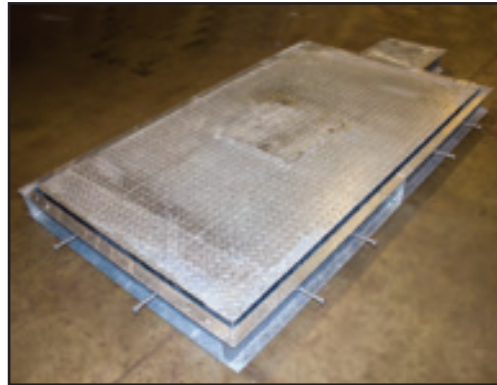
RECREATIONAL



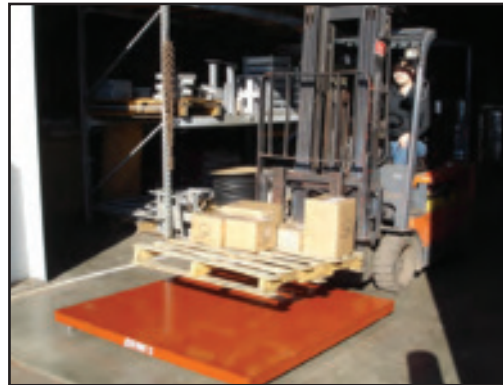
LIVESTOCK



AGRICULTURAL



WAREHOUSE



INDUSTRIAL



MANUFACTURING



FEATURES AND SPECIFICATIONS

- COC: 94-092A2
- Above ground or pit installation
- NTEP capacities: 500 lb x .1 lb to 20,000 x 5 lb
- 4 3/8" deck height (500 - 10,000 lb.)
- 5 3/8" deck height (20,000 lb.)
- NTEP platform sizes: 2' x 2' - 8' x 10'
- Tread plate deck (smooth plate option)
- Formed c-channel substructure
- Top access junction box (side access option)
- Stainless steel ball encapsulated feet
- Top access foot leveling and lifting eyes
- Acrylic Alkyd enamel paint system
- Plated alloy steel, 350 Ohms, 3.0 mV/V load cell